

i-Solution

i-Solution

i-Solution i-Solution

Specification	i-solution	i-solution Lite	i-solution Fluor
Input Device 1) All TWAIN Support Devices. 2) WDM driver for WinXP 3) Nikon DXM1200F/1200 cameras 4) Optronics digital cameras 5) Jenoptik digital cameras 6) Spot digital camreas 7) Pixelink digital camera 8) Olympus Digital Cameras Direct Control Driver. 9) Frame Grabbers. 10) TV Cards/Video Capture Cards. 11) CCD Cameras.	●	●	●
Image File Formats jpg, jpeg, jpe, tif, tiff, bmp, gif, pcx, tga mpg, mpeg, avi, mov, img, rpt, txt.	●	●	●
Annotate Line, Polyline, Spline, Rectangle, Ellipse Text label.	●	●	●
Edit Undo, Redo, Copy, Paste, Paste New Delete, Delete All, Properties.	●	●	●
Image 1) Mode Change : Grayscale, RGB, HSB YUV, 8bit and 16bit Channel. 2) Clone, Crop, AOI, Resize, Rotate Split, Combine, Sequence, Handling Image Information.	●	●	●
AOI Rectangle, Arbitrary Rectangle, Ellipse Arbitrary Ellipse, Polygon, Spline Shape Magic Wand.	●	●	●
Calibration 1) Calibration Marker. 2) X and Y Axes Spatial Calibration. 3) Save Calibration file for the further use.	●	●	●
Manual Measurement. Point, Straight Line, Spline, Polyline Polygon, Rectangle, Circle, Circle By 3 Points, Angle, Angle Between 2 Lines Distance, Parallel Lines, Lines From Reference.	●	●	●
Objects Measurement Rectangle, Arbitrary Rectangle, Ellipse Arbitrary Ellipse, Polygon, Spline Shape Magic Wand, Invert Objects, Separate Object.	●		●

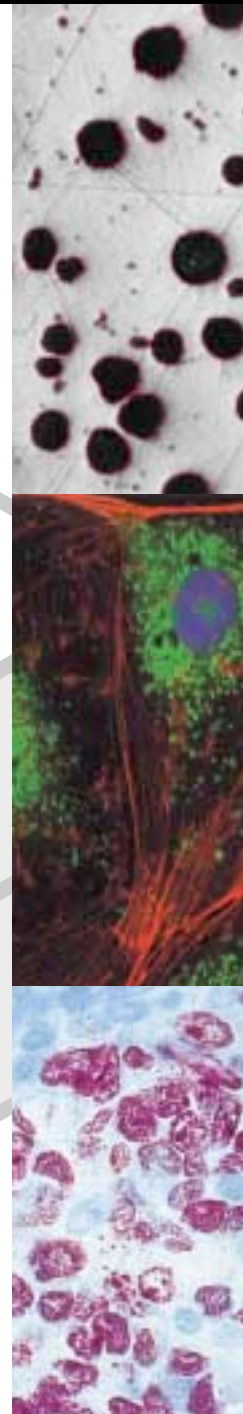
Specification	i-solution	i-solution Lite	i-solution Fluor
Measurement Parameters Area, Hole Area, Perimeter, Hole Perimeter, Max Length, Max Width Average Dimension, Size by X, Size by Y, Average Chord, Min Feret Diameter Max Feret Diameter, Average Feret Diameter, Dual Circle Distance, Major Ellipse Distance, Minor Ellipse Distance Line Length, Line Width, Ribbon Length Ribbon Width, Circle Sf, Ellipse Sf Roundness, Elongation, Center X, Center Y, Angle, Red Color, Green Color, Blue Color, Hue, Intensity.	●		●
Zoom Window Zoom In, Zoom Out, Zoom 100%, Fit to Window, Fit to Image, Status Bar Context Window, Zoom in Window.	●	●	●
Window Split Horizontal, Split Vertical, Cascade Tile Horizontal, Tile Vertical, Arrange icons.	●	●	●
Result Data 1) DDE To Excel. 2) Saving with Text File. 3) Saving all the image and the result data together with img File Format	●	●	●
Focus Enhancement (Multi-focus) Image Stitching (Image Tiling) Sequence Image Control SDK(System Development Kit) Support Dynamic preview window size Measurement on the live preview window Cross-hairs (Cross mark) on the live preview window. Making a movie file (avi, mpeg, mov) with still images	●	●	●
Image merging and overlay 1) RGB 2) Mean 3)Mask 4) Add			●

i-Solution image processing, measuring and analyzation software is a 32-bit COM-based application for Microsoft Windows. i-Solution can be easily extended with the use of plug-in components. The intuitive user interface provides many powerful functions including fluorescence image merging (including DIC and phase contrast images with fluorescence), focus enhancement, automatic image stitching, dynamic preview window size, live measurement on the preview window, and much more. We IMT (Image and Microscope Tech.) also provides OEM products and customized modules.

i - SOLUTION

Measuring and Analyzing with Easy

i-Solution is an Image Processing, Measuring, and Analyzing program. 32bit COM-based application for MS Windows. Easily extended with usage of Plug-Ins components.



i-Solution i-Solution Lite i-Solution Fluor

We also provides OEM Products
and Customized modules.

i-Solution general features and functions.

i-Solution is an Image Processing , Measuring , and Analyzing program.

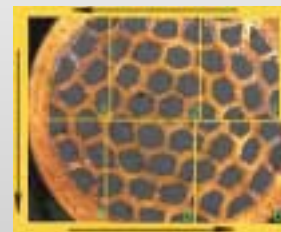
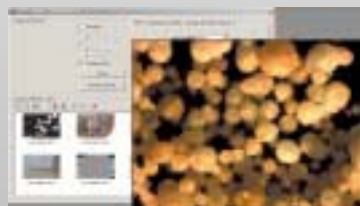
- 32-bit COM based application for MS Windows
- Easily extended with usage of Plug-Ins components

Acquire

- Acquire gray scale and color images directly through a TWAIN-compliant device.
- Supporting various digital cameras including direct control driver for Olympus cameras.
- DirectX WDM driver
- Various frame grabbers and CCD cameras

Image

- Support GrayScale, RGB, HSB, YUV formats and converts one to another
- 8/16 bit per color channel (up to 48 bit per pixel);
- Paste gray scale and color images from the clipboard;
- Load and save images in the following formats: bmp, jpg, jpeg, tif, tiff, pcx, gif, tag, native(tex, img, rpt)
- Open image sequence of the formats mentioned below in case you have installed DirectX version 7.0 and higher: avi, mpeg, mov;
- Enhance image quality (brightness/contrast/gamma, smoothing, sharpening, etc);
- Work with single frame from image sequence the way like with single image;
- Edit images: Resize with/without aspect ratio, Rotate image 90 degrees clockwise, 90 degrees counterclockwise, arbitrary angle;
- Annotate image: type comments, draw straight and free lines, arrows, rectangle, circle and other figures;
- Multi-focus.



Measuring and Analyzing with Easy

i-Solution is an Image Processing, Measuring, and Analyzing program. If you know English, you don't have to read the User Guide. If you don't, sorry but just follow your intuition with icons. You can't miss it, either.

Measurement

- Define objects on the image:
 - interactive drawing of objects outlines;
 - thresholding the image by brightness or color automatically and manually;
- Make morphological operation (Open, Close, Dilate, etc) upon outlined objects;
- Measure morphological parameters and optical parameters (brightness and color channels, optical densities) upon outlined objects;
- Separate objects in classes according to the given parameters;
- Statistically treat measurement results, plot a class distribution diagram;
- Perform manual measurements of linear and angular values;
- Export measurement results to MS Excel or save as .txt file format for further processing.

System Requirements

- PC with a Pentium-class processor; Pentium 166MMX or higher processor recommended.
- Microsoft Windows 95/98/ME/NT/2000/XP.
- 64 MB of RAM or more.
- 15 MB hard-disk space.
- VGA or higher-resolution monitor; Super VGA recommended.
- Microsoft Mouse or compatible pointing device.
- USB or LPT port for hardware key (depends on delivery).

